

Superwatt Power

The ideal partner to power you

DIESEL GENERATOR SET

SMALL POWER RANGE

(7.5-40KVA)
50HZ, 1500RPM



SWT-KUBOTA SERIES



Shandong Superwatt Power Equipment Co.,Ltd

New Designed Generator Sets Superwatt's Most Compact Series Generators

SWT-Kubota series generator sets are designed and built according to high quality standards to better meet requirements of cost effective, compactness, reliability and durability.



Ultra Compact

SWT-Kubota series generator sets are designed to better meet the needs of saving shipping and installation space. We choose the compact engine, alternator, controller and other components, in the soundproof cover, chassis, internal structure also carried out a simplified design, so that the whole generator set more compact, smaller, lighter weight, effectively save transportation and installation costs.

Top Quality Engine

The generator set is powered by Kubota, a leading Japanese brand specializing in low-power engines. Kubota engines use compact design technology to provide users with "high power density" and "high quality" engines, powerful and durable. Kubota has a strong service network in the world, about 160 dealers to provide you with timely after-sales service.



High Efficiency Alternator

All the genset use Leroy Somer, one world famous brand alternator as standard configuration. Its TAL series alternators are manufactured to high quality standards, with its superior electrical performance, innovative terminal box design, optimized mechanical design, easy maintenance to meet the standby and primary needs of telecommunications, commercial and industrial markets.

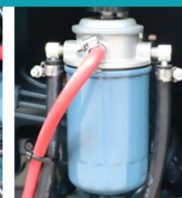
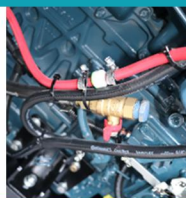
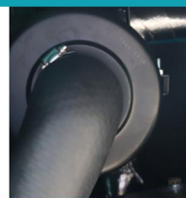
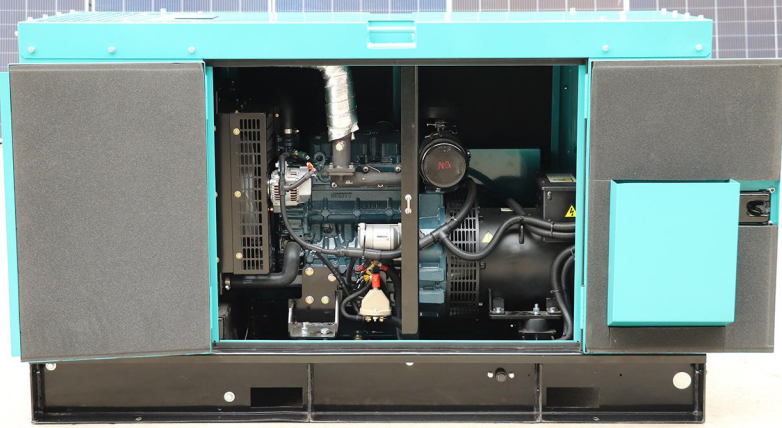
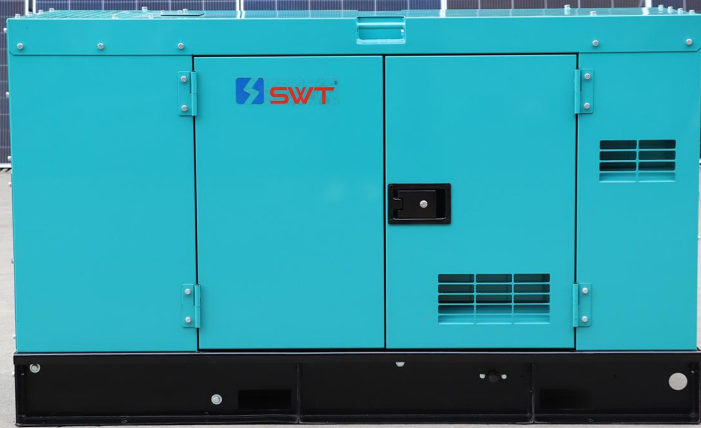
Intelligent Controller

Our genset use the top-class DEIF controller, The standard model is SGC120, which is suitable for small power genset with the basic functions of manual, automatic, and remote start/stop, AMF, CANbus, Modbus communication, measurement and protection. User-friendly interface, LCD display, integrated structure design, easy to install and use. Deep Sea, ComAp, and other well-known brands are optional.



Standard Compliance

SWT company has passed ISO 9001 Quality Management System, ISO 14001 Environmental Management System and ISO 45001 Occupational Health and Safety Management System. SWT gensets are designed, manufactured and tested in accordance with the international standard such as, GB2820, ISO 8528, ISO 3046, IEC 60034, and so on.



Standard accessories

- Engine
- Alternator
- Radiator
- Chassis
- Control system
- CHINT circuit breaker
- Residential muffler
- Maintenance-free battery
- Base fuel tank
- Soundproof canopy
- Test report
- Electrical diagram
- Operation manual
- Certificate of quality

>>Optional Brands

Optional accessories

- Anti-condensation heater
- Water jacket heater
- Oil heater
- Separate daily fuel tank
- Bulk storage tank
- Auto oil make-up device
- Auto fuel filling device
- Hospital muffler
- Battery charger
- Super silent canopy
- Spark arrester
- Trailer
- Special tool kit
- RS485 extension module
- Ethernet communication
- Cloud monitor
- Electric circuit breaker
- ATS panel
- Spare parts



Note: Superwatt guarantees that all parts mentioned with a specific brand are genuine. Authenticity of parts can be verified through official website of related brands.

Specifications

Model	SKL8.3-1P	SKL10.6-1P	SKL14-1P	SKL16.5-1P	SKL22.5-1P	SKL25-1P	SKL32.5-1P	SKL40-1P	
Generator rating output kW/kVA	6/7.5	7.7/9.6	10/12.5	12/15	16/20	18/23	24/30	29/36	
Diesel Engine	Model	D1105-BG	D1105-BG	V1505-BG	D1803-BG	V2403-BG	V2003-T-BG	V3300-BG	V3300-T-BG
	Engine Characters	Vertical, Water-cooled, 4-cycle diesel engine							
	No. of Cylinders	3	3	4	3	4	4	4	4
	Bore & Stroke, mm	78/78.4	78/78.4	78/78.4	87/102.4	87/102.4	83/92.4	98/110	98/110
	Rotating Speed,rpm	1500	1500	1500	1500	1500	1500	1500	1500
	Continuous Output, kW	8.4	8.4	11.1	15.6	18.8	20.4	26.3	32.1
	Governor type	Mechanical	Mechanical	Mechanical	Electronic	Electronic	Mechanical	Mechanical	Mechanical
	Starter Capacity,V-A	12-1.0	12-1.0	12-1.2	12-1.2	12-1.4	12-1.4	12-2.5	12-2.5
Alternator*1	Frequency,HZ	50							
	Voltage,V	110-240							
	Output,kVA	9	10.8	15	18	25	25	35	40
	Power Factor	0.8							
	No.of Phase	1							
Excitation	Brushless, self-exciting								
Others	Length:L mm	1750	1750	1750	1900	1900	1900	2250	2250
	Width: W mm	750	750	750	750	750	750	880	880
	Height: H mm	1150	1150	1150	1150	1150	1150	1260	1260
	Dry Weight kgs	588	595	638	784	856	858	1111	1120
	Noise Level @ 7m way*2	67	67	68	69	69	70	71	71
	Fuel Tank Capacity, L	70	70	70	70	70	70	140	140
Model	SKL11		SKL14	SKL16.5	SKL22.5	SKL25	SKL32.5	SKL40	
Generator rating output kW/kVA	8/10		10/12.5	12/15	16/20	18/23	24/30	29/36	
Diesel Engine	Model	D1105-BG		V1505-BG	D1803-BG	V2403-BG	V2003-T-BG	V3300-BG	V3300-T-BG
	Engine Characters	Vertical, Water-cooled, 4-cycle diesel engine							
	No. of Cylinders	3		4	3	4	4	4	4
	Bore & Stroke, mm	78/78.4		78/78.4	87/102.4	87/102.4	83/92.4	98/110	98/110
	Rotating Speed,rpm	1500		1500	1500	1500	1500	1500	1500
	Continuous Output. kW	8.4		11.1	15.6	18.8	20.4	26.3	32.1
	Governor type	Mechanical		Mechanical	Electronic	Electronic	Mechanical	Mechanical	Mechanical
	Starter Capacity,V-A	12-1.0		12-1.2	12-1.2	12-1.4	12-1.4	12-2.5	12-2.5
Alternator*1	Frequency,HZ	50							
	Voltage,V	380-415							
	Output,kVA	11		15	18	25	25	35	40
	Power factor	0.8							
	No.of Phase	3							
Excitation	Brushless, self-exciting								
Others	Length:L mm	1750		1750	1900	1900	1900	2250	2250
	Width: W mm	750		750	750	750	750	880	880
	Height: H mm	1150		1150	1150	1150	1150	1260	1260
	Dry Weight kgs	588		615	755	803	822	1042	1074
	Noise Level @ 7m way*2	67		68	69	69	70	71	71
	Fuel Tank Capacity, L	70		70	70	70	70	140	140

※1 Brand of alternator is optional upon request

※2 Noise reflects the average level which is measured under full load at four points of Generator set

SWT has a policy of continuous improvement on products and reserve the right to change specification without prior notice



Superwatt Power

Add: 7th Industry Park, Jining Hi-Tech Development Zone, Shandong, China. PC 272104



Tel:+86-5372780753 Fax:+86-537-2780763

E-mail:info@swt.cn Website:www.swt.cn

www.facebook.com/SuperwattPower